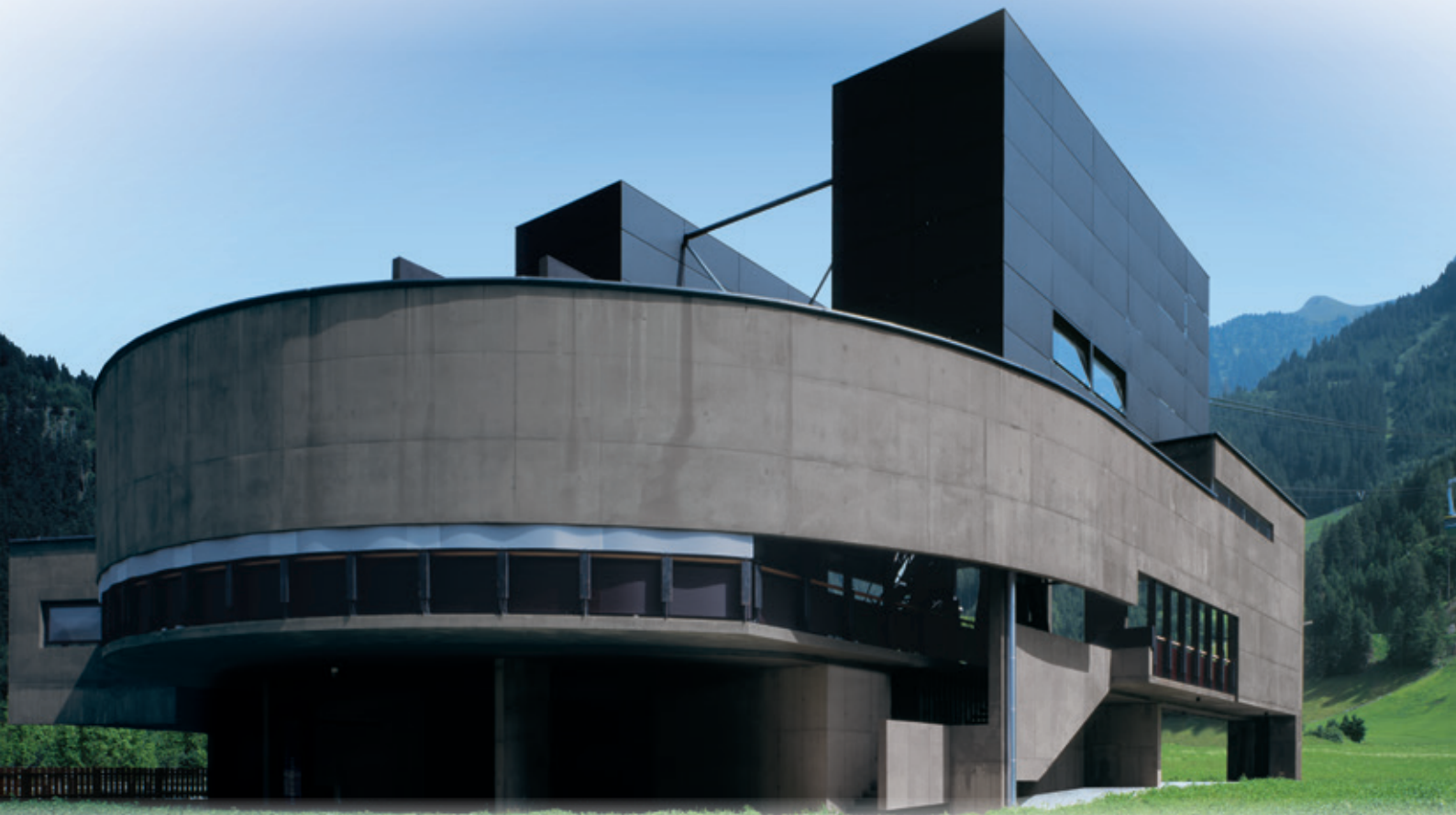


QUALITY COLORS.



Case Study

Ahornbahn, Mayrhofen, Tyrol, Austria

COLORED CONCRETE WORKS®

An initiative of LANXESS

QUALITY WORKS.

LANXESS
Energizing Chemistry

AN AERIAL TRAMWAY IN HARMONY WITH ITS SURROUNDINGS.



- The Ahornbahn was recognized with the 2007 Architecture Prize of the Austrian Cement Industry Association (Vereinigung der Österreichischen Zementindustrie VÖZ) and the "best architects 08" award.

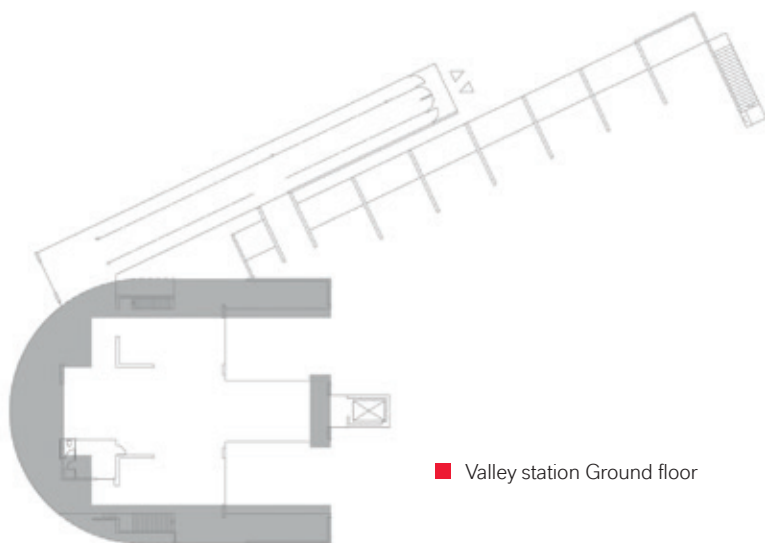


- Austria's largest aerial tramway can transport up to 160 passengers over a distance of 3 km to the plateau of Mt. Ahorn in only 6 ½ minutes.



Precise integration into the town and the landscape.

The new Mayrhofen Ahornbahn (Mt. Ahorn aerial tramway), located in the Tyrolean Ziller Valley, is an architectural monument to the mountains and a gateway to nature. What separates this project by M9 Architekten Senfter + Lanzinger from many contemporary lift facilities is the bold and precise integration into the town and the landscape. The special use of concrete as a construction material and the high-quality workmanship places the structure in dialog with its surroundings. Rather than exposing it, the architecture deflects attention from the high-tech equipment concealed within the structure, only revealing the technical intricacies of the aerial tramway to its guests shortly before departure.



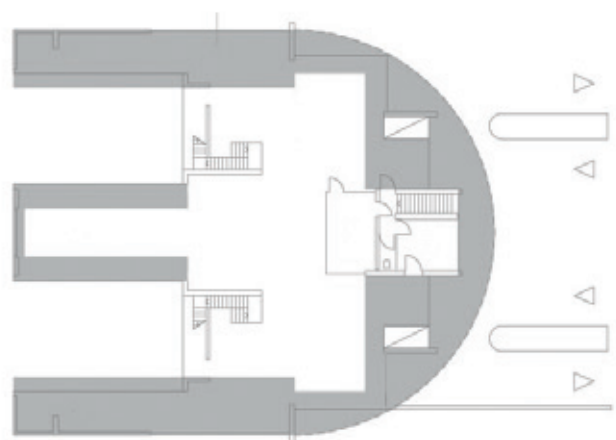
■ Valley station Ground floor

COLOR INTEGRATES THE ARCHITECTURE INTO THE NATURAL SPACE.



Monolithic architecture.

Their coherent coloration and material character make the buildings of the aerial tramway monolithic accents in the landscape. The materials used – concrete colored black with **Bayferrox® 330** from LANXESS and black sheet metal – help to more easily integrate the superstructures into the natural environs (gray-brown to dark- & olive-green tones of the high plateau). This integration into the townscape and above all into the landscape is symbolic of the responsibility taken for maintaining an intact natural and cultural landscape, and demonstrates that an intelligent attitude toward construction and contemporary access to architecture can add value to a structure.



■ Mountain station Ground floor



**“COLOR IS AN INTERMEDIARY BETWEEN
NATURE AND ARCHITECTURE.”**

Architect

Antonius Lanzinger

M9 Architekten
Senfter + Lanzinger,
Innsbruck

Technical data

- Aerial tramway: Elevation: 1,300 m;
Inclined length: 3,045 m; Speed: 10 m/s
- Capacity: 1,200 passengers/h; Travel time: 6:33 min
- Cable weights - Haulage cable: 27.6 t (3,200 m long)
Balance cable: 10.2 t (3,200 m long);
Per track cable: 97.4 t (3,430 m long);
Total dead weight: approx. 430 t; Pylons: 2
- Track cable diameter: 70 mm;
Haulage cable diameter: 47 mm
(horizontal cable tension force 600)
- Gondolas: 40 m² base area; Interior cabin height: 2.2 m;
Empty weight: 5 t; Weight with interior appointments: 12 t;
Passengers: max. 160



EXCITING SPECIALTY MIXTURE.

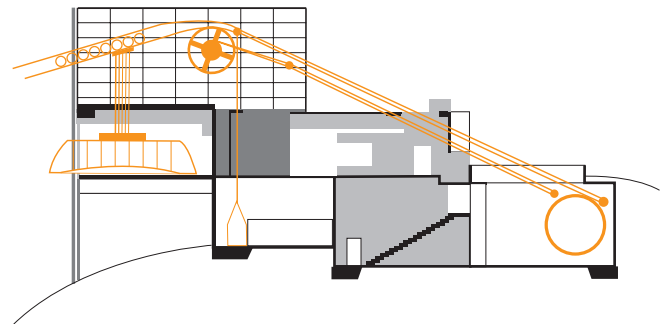
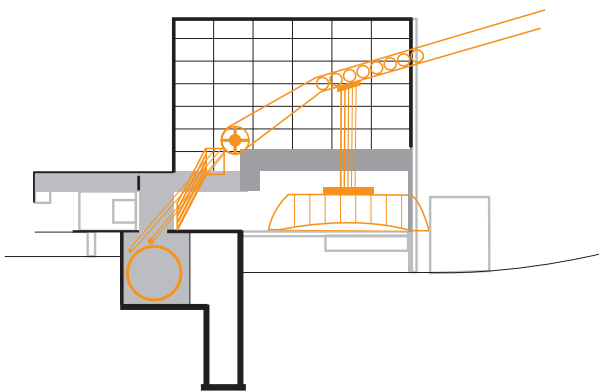
Manually metered, quickly dispersed and everlasting.

The two aerial tramway stations represent a masterpiece of concrete construction. Vormperbach-based Derfeser, Tyrol's largest supplier of ready-mix concrete, processed and transported a total of 27 metric tons of the LANXESS pigment Bayferrox® 330. The powder pigment was manually metered directly into the mixing drum of the truck mixer in portions according to specified formulations. The rapid and precise fine dispersion of the pigment ensures good integral coloration of the specialty concrete, which retains its intense coloration even under the extreme light and weather conditions of the Tyrolean mountains and is thus maintenance free.





- The concrete, which is through - colored black using Bayferrox® 330, and all other materials are optimally matched to the surroundings.



- Cross-section through the valley and mountain stations

FOR ADDITIONAL INFORMATION, CONTACT THE LANXESS COUNTRY REPRESENTATIVE.

Germany

LANXESS Deutschland GmbH
Business Unit Inorganic Pigments
Rheinuferstraße 7-9
47829 Krefeld
GERMANY
Tel.: +49 221 8885 3974
Fax: +49 2151 88 4133

USA

LANXESS Corporation
Business Unit Inorganic Pigments
111 RIDC Park West Drive
Pittsburgh, PA 15275-1112
USA
Tel.: +1 412 809 1000
Fax: +1 412 809 1059

Singapore

LANXESS Pte. Ltd.
Business Unit Inorganic Pigments
3A International Business Park
#07-10/18 ICON@IBP Tower B
SINGAPORE 609935
Tel.: +65 6725 5828
Fax: +65 6725 4828

Australia

LANXESS Pty. Ltd.
Business Unit Inorganic Pigments
Unit 1/35 Carter Street
Lidcombe, NSW 2141
AUSTRALIA
Tel.: +61 28748 3910
Fax: +61 28748 3999

Japan

LANXESS K.K.
Business Unit Inorganic Pigments
Marunouchi Kitaguchi Building 23F
1-6-5, Marunouchi, Chiyoda-ku
Tokyo 100-8215
JAPAN
Tel.: +81 3 5293 8017
Fax: +81 3 5219 9776

Great Britain

LANXESS Ltd.
Colour Works
Lichfield Road
Branston
Burton-on-Trent
Staffordshire, DE14 3WH
UNITED KINGDOM
Tel.: +44 1283 714200
Fax: +44 1283 714201

Brazil

LANXESS Indústria de Produtos
Químicos e Plásticos Ltda.
Av. Maria Coelho de Aguiar, 215 Bloco
B - 2º Andar
05804-902 São Paulo
BRAZIL
Tel.: +55 11 3741 2615
Fax: +55 11 3741 3933

Italy

LANXESS S.r.l.
Segreen Business Park, Palazzo Y
Via San Bovio n.1/3
20090 - Milano San Felice - Segrate
ITALY
Tel.: +39 0230722644
Fax: +39 0230724298

South Korea

LANXESS Korea Ltd.
9F, Samsung Boramae Omni Tower
23, Boramae-ro 5-gil
Dongjak-gu, Seoul
07071, Korea
REPUBLIC OF KOREA
Tel.: +82 2 6715 5100
Fax: +82 2 847 3295

Central and Eastern Europe

LANXESS Central Eastern
Europe s.r.o
EUROVEA
Central
2 Pribinova 6
811 09 Bratislava
Slovak Republic
Tel.: +421 2 3215 1626
Fax: +421 2 3215 1699

Spain

Europigments, S.L.
Business Unit Inorganic Pigments
Arquitectura, 27
Polígono Industrial Els Garrofers
08340 Vilassar de Mar
SPAIN
Tel.: +34 937 540 770
Fax: +34 937 540 784

China

LANXESS Specialty Chemicals
Co., Ltd.
No. 458 Haijin Road
Jinshanwei Town
Shanghai, 200540
R.P. CHINA
Tel.: +86 21 5284 7860
Fax: +86 21 6250 0769

India

LANXESS House
Plot no's. A162-164
Road No.27, MIDC
Wagle Estate
Thane (West) - 400604
Maharashtra, INDIA
Tel.: +91 22 25871000
Fax: +91 22 25871287

France

LANXESS S.A.S.
Inorganic Pigments
Le Doublon A
11, avenue Dubonnet
92407 Courbevoie Cédex
FRANCE
Tel.: +33 1 80 46 30 00
Fax: +33 1 80 46 30 45

LANXESS
Energing Chemistry

Health and safety information

Appropriate documentation was compiled with information on the health and safety measures that have to be observed in handling the LANXESS products mentioned in this brochure. For materials mentioned here that are not LANXESS products, the operational hygiene and other safety measures recommended by the respective manufacturers must be observed. Before working with these products, you must read and familiarise yourself with the available information on their dangers, proper use and handling. This point is of decisive importance. Information is available in various forms: such as safety data sheets, product information and product labels. Please contact your LANXESS representative in Germany or the Department of Regulatory Affairs and Product Safety of LANXESS Deutschland. For business in the USA, please contact the LANXESS Product Safety and Regulatory Affairs Department in Pittsburgh, Pennsylvania.

Information on Regulatory Compliance

For some end use purposes of the products found in this brochure, the applicable regulations must be observed, including those of the FDA, BIF, NSF, USDA and CPSC. If you have any questions regarding the approval status of these products, please contact your representative at LANXESS Deutschland GmbH or the Department of Regulatory Affairs and Product Safety of LANXESS Deutschland GmbH or, for business in the USA, your representative at LANXESS Corporation, the LANXESS Regulatory Affairs Manager in Pittsburgh, Pennsylvania. How and for which purposes you utilise our products, our technical support and our information (oral, written or through product assessments) is beyond our control. The same applies for suggested formulations and recommendations. Therefore it is indispensable that you check our products, our technical support and our information for their suitability for the intended processes and purposes. The application-specific analysis must encompass at least suitability tests in regard to technical as well as health, safety and environmental aspects. Such testing has not necessarily been done by us. Unless agreed to otherwise in writing, all products are sold exclusively in accordance with our general terms and conditions for sale and delivery. Information and technical support are provided without warranty (we reserve the right to make changes at any time). It is expressly agreed that you release us from any possible liability resulting from the use of our products, technical support and information due to fault, contract or other reasons and that you assume this liability yourself.

Any statements and recommendations not contained in this brochure are not authorised and are not binding for us. None of the information in this brochure is to be interpreted as a recommendation to use the products in any way that violates commercial proprietary rights such as patents in regard to any materials or their use. Furthermore, neither explicitly nor implicitly is any licence granted under commercial proprietary rights such as patents.

LANXESS Deutschland GmbH

Business Unit

Inorganic Pigments

Rheinuferstraße 7-9

47829 Krefeld

GERMANY

E-Mail: coloredconcreteworks

@lanxess.com

www.lanxess.com

www.bayferrox.com

www.colored-concrete-works.com

Bayferrox® is a registered trademark of Bayer AG, Leverkusen, Germany.
Colortherm® is a registered trademark of the LANXESS Group.

Issue 1/2017

Visit our Internet site:
www.colored-concrete-works.com



PROJECT DATA



Location

Mayrhofen, Tyrol, Austria

Architecture

M9 Architekten Senfter + Lanzinger, Innsbruck

Principal

Mayrhofner Bergbahnen AG

Project participants

Mader + Flatz Baustatik, Bregenz (statics);
Rieder (execution of concrete); Grömer (structural
steel); Trinkl (metalwork); Foidl (glass);
Salzmann Ingenieurbüro (aerial tramway planning)

Aerial tramway construction

Doppelmayr

Structure type

Mountain and valley station

Construction

Solid reinforced concrete construction

Pigment

3 % Bayferrox[®] 330/kg cement

Year of construction

2006



Bayferrox[®] 330